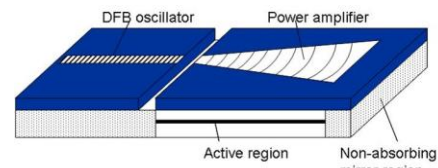
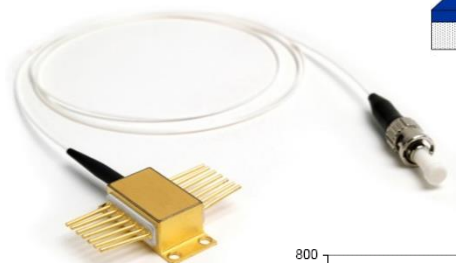


BrightLock® Single Mode Laser

Features

- High power single mode
- TEC, photodiode and thermistor
- 1550 nm
- PM fiber delivery (option)
- BrightLock™ internal gratings technology
- 500 kHz linewidth

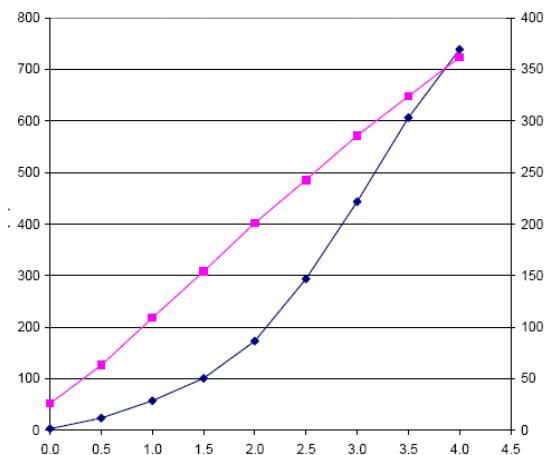


Applications

- Fiber laser seeding
- Direct materials processing
- Laser communications and ranging
- LIDAR

Benefits

- Reduces number of system components and amplifying stages
- Enables low cost direct diode replacement of solid state lasers
- Excellent frequency doubling efficiency possible
- Longer working distance, simpler optical design



Module Number	7115-0000*
Center Wavelength	1550 nm
Center Wavelength Tolerance	±5 nm
Output Power from fiber	500 mW CW
Spectral width (FWHM)	< 0.1nm FWHM
Temperature tuning coefficient	0.13 nm/°C
Pulse length	CW
Rep rate	CW
Operating Current Amp section	< 4.0 A
Operating Current Osc section	< 0.7 A
Operating Voltage Amp Section	< 1.9 V
Operating Voltage Osc. Section	< 3.9 V
Photodiode current	>300µA
Thermistor	10kOhm
TEC current	< 5.2 A
TEC voltage	< 4.3 V
ESD protection (HBM)	YES
Case	Floating
Operating Temperature (case)	0-40 °C
Fiber	SMF-28
Fiber length	1 meter
Fiber jacketing	900µm jacket
Fiber connector	FC/APC
Fiber bend radius	25mm
Storage temperature	-40 to +85 degC
Relative humidity, non-condensing	5% to 90%

* Specs with TEC setting at 20 °C

Warning: Class 4 Laser, Invisible Laser Radiation – Avoid Eye or Skin Exposure to Direct or Scattered Radiation.

For reference only. Product specifications may change without notice.

15632 Roxford Street • Sylmar, CA 91342

www.qpclasers.com

BrightLock® Single Mode Laser

